

Refresh Member Benefits

By joining Refresh you'll become entitled to the following benefits:

- Contact Lenses
- Contact Lens Solutions (where required)
- Lens Connect – Home Delivery (subject to availability)
- Routine After-Care Examinations
- Any Additional Contact Lens Checks
- Replacement Lenses
(should you lose or damage them – except colours)
- Free Eye Examination (every two years)
- 25% Off the Complete Price of Spectacles.

Book an appointment today

Simply book an appointment for a consultation and our optician will assess your suitability to wear contact lenses and advise you on the type of lens most likely to suit your requirements. Contact lenses are easy to use and once you have been given instruction on wear and care you will find that putting them in and taking them out only takes a few seconds.

Most of all enjoy the freedom contact lenses offer – and with Refresh this freedom is carefree...

Contact lens consultation appointment

An appointment for a contact lens consultation has been made for you

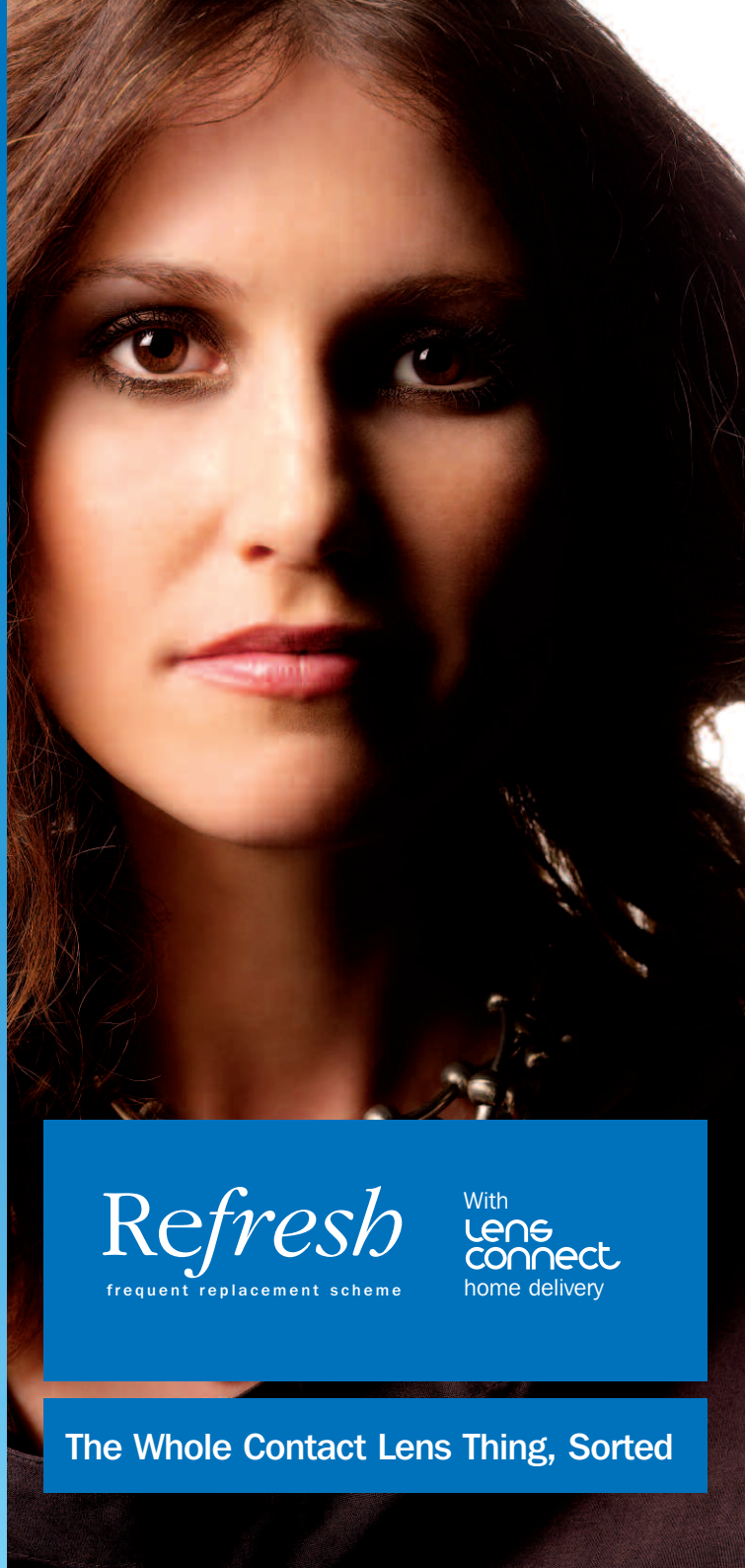
on: _____ at:

with:

Refresh
frequent replacement scheme

With
**lens
connect**
home delivery

The Whole Contact Lens Thing, Sorted



About Contact Lenses

Contact lenses sit on the eye and remain centrally located. This provides good, clear, unobstructed all round vision. In addition to this the eyelids act to clear the lenses every time you blink, enabling you to see clearly in the rain and preventing misting when you walk into a warm room.

The type of lenses you wear will vary according to your lifestyle and visual requirements.

Many new designs and materials mean there is a lens to suit almost every lifestyle and there are very few eye conditions that cannot be corrected with contact lenses.

Even if you've tried contact lenses before and stopped wearing due to problems with comfort or vision there is now almost certain to be a lens to suit your requirements.

They suit all age groups because the deciding factor (eye stability) is not age related.

Correcting astigmatism is no longer a barrier to contact lenses as there are a number of lenses that are able to correct this type of eyesight.

Bifocal and multi-focal lenses are now available enabling you to disguise the fact that you have reached that certain age when reading spectacles are a necessity.

The Whole Contact Lens Thing, Sorted

Refresh is a frequent replacement contact lens scheme which answers all your contact lens needs.

With Refresh Everything's Included

As a member of Refresh you receive eye examinations, regular check-ups, lenses and solutions (if required) all within one simple 'all-inclusive' price.

And Now Refresh Really Delivers

Thanks to 'Lens Connect' Refresh now delivers to your door – so you no longer need to pick up lenses or solutions from your optician. For no extra charge your lenses and solutions are sent to you direct, how convenient!

Complete Care Benefits

Join Refresh and everything you should need for carefree contact lens wear is included with a simple monthly Direct Debit payment. From the consulting room to your home – you're covered.

What is 'Lens Connect'?

Lens Connect is a home delivery service for contact lens wearers. Lenses (and solutions if required) are packed and dispatched direct to your home (or preferred address) using Royal Mail. These are sent to you before your current supplies run out – so your contact lens wear is uninterrupted. The packs, including lens and solution packaging, are specially designed to fit through regular letter boxes. You now no longer have to visit your optician for continuous contact lens supply.

lens connect

Visit lensconnect.com for more information.